

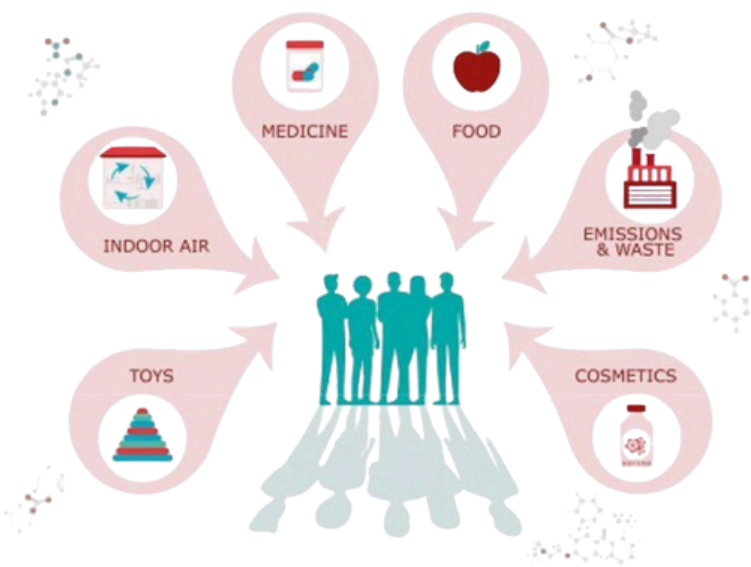
WELCOME TO BGG 2.0:

A New Era of Awareness,
Action & Impact



WHAT IS BGG 2.0?

Beaches Go Green 2.0 connects personal health to planet health- empowering cleaner choices, reducing plastic and toxins, and inspiring action for a healthier future.



➡ ENVIRONMENTAL TOXINS

Environmental toxins are chemicals in our everyday world that can harm our health and the planet. They're often invisible, unregulated, and hiding in products that we use all the time.

These toxins are found in:

- Personal care products (lotions, shampoos, deodorants)
- Synthetic clothing & fast fashion
- Plastic packaging & storage
- Cleaning supplies & air fresheners
- Tap water & non-organic foods
- Furniture, mattresses & home decor



➞ WHY IT MATTERS

Many of these chemicals are endocrine disruptors, carcinogens, or neurotoxins. They're linked to:

- Hormone imbalances
- Reproductive health issues
- Allergies and asthma
- Learning and behavior problems
- Long-term diseases like cancer

Children & teens are especially at risk because their bodies are rapidly developing—and they're exposed to toxins every day through the products that they use, the clothes that they wear, and the food that they eat.

BEACHES GO GREEN 2.0



**HEALTHY PLANET
HEALTHY YOU**

TO LEARN MORE:



www.beachescogreen.org

GIVE US A FOLLOW:



➞ IT'S NOT JUST ABOUT US

These same chemicals pollute our air, water, soil, and oceans.

They harm wildlife, poison ecosystems, and create non-biodegradable waste that sticks around for centuries.

BGG 2.0 connects human health and planetary health—because they are one and the same.

➞ WHAT BGG 2.0 IS HERE TO DO

- **Educate:** build awareness of environmental toxins and their impact on both personal and planetary health
- **Advocate:** encourage the community to speak up and make informed choices that protect our shared future
- **Change:** support the shift toward sustainable, toxin-free alternatives in everyday life
- **Lead:** inspire others by modeling conscious choices and healthy, sustainable living